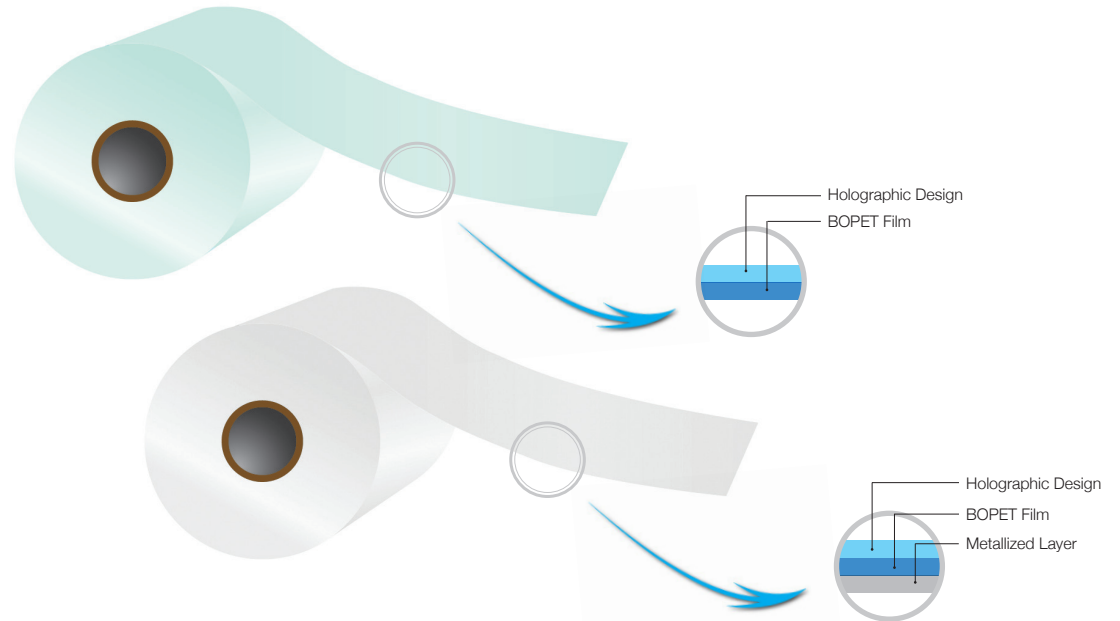


PETLAR HD (Transparent) and HDM (Metallized) grades are Biaxially Oriented Soft Embossed Holographic Polyester Films with excellent printable surface and high gloss. These are available in various standard designs. This film is an ideal substrate for brand protection and preventing duplication. The film possesses good mechanical, surface & thermal properties and ensures excellent processability.

PETLAR HD and HDM grades conform to the latest EC directives, REACH specifications and US FDA regulations for food contact applications. Available designs: Champagne (C1), Cracked Ice (C2), Dot Matrix (D1), Eyeballs (E1), Fire Works (F1), Glitter (G1), Galaxy (G2), Liner (L1), Rectangles (R1), Rainbow (R2), Snow (S1), Wall (W1) and Whirl (W2).



## APPLICATIONS

- Flexible Packaging
- Carton Lamination
- Gift Wrapping & sequins
- Decorative & security
- High end packaging like, perfumes, cosmetics etc

Standard Roll Presentation			
Core ID	6 Inch/152MM	3 Inch/76MM	
<b>Thickness (Micron)</b>	<b>12</b>		
<b>Length (Meters)</b>	<b>9000</b>		<b>Approx Outer Roll Diameter (mm)</b>
	<b>12000</b>		
	<b>18000</b>	580	
	<b>24000</b>	660	
	<b>36000</b>	795	
	<b>42000</b>	850	
<b>Width Range</b>	400-2500 mm / 15-99 Inch		
<i>Customised specs also available on request</i>			

## SRF Limited, Packaging Films Business

Block-C, Sector-45, Gurgaon-122003, Haryana, India Tel: (+91-124) 435 4400, Fax: (+91-124) 435 4500, pfbfilms@srf.com, www.srf.com



**Indore:** Plot No C 1-8, C 21-30, Indore Special Economic Zone, Pithampur - 454775, Distt. Dhar, Madhya Pradesh, **India.**

**Kashipur:** Plot No -12, Rampura, Ramnagar Road, Kashipur-244713, Distt. Udhampur Singh Nagar, Uttaranchal, **India.**

**Rayong:** D-20, Hemraj Eastern Seaboard Industrial Estate, 112, M003, Tambon Tasith, Amphur Pluakdaeng, Rayong Province 21140, **Thailand.**



Properties	Unit	Test Method	Product Code	
			HD0120	HDM0120
<b>GENERAL</b>				
Nominal Thickness	Micron	SRF Method	12	12
	Gauge		48	48
Yield	m <sup>2</sup> /kg		60	60
	in <sup>2</sup> /lb		42000	42000
<b>MECHANICAL</b>				
Tensile Strength (min)	MD	kg/cm <sup>2</sup> (kpsi)	2000 29	2000 29
	TD	kg/cm <sup>2</sup> (kpsi)	2100 30	2100 30
Elongation at Break (min)	MD	%	110	110
	TD		100	100
<b>SURFACE</b>				
Coefficient of Friction	Static	-	0.50	0.50
	Dynamic	-	0.45	0.45
Surface Energy	Plain Side	Dyne/cm	44	44
	Corona Side		52+	52+
<b>THERMAL</b>				
Shrinkage (150°C, 30 min)	MD	%	1.6	1.6
	TD		0.0	0.0
<b>OPTICAL &amp; BARRIER</b>				
Haze		%	5.0	-
Transmittance			85	-
Optical Density *		-	-	2.2
WVTR (38°C & 90% RH)		gm/m <sup>2</sup> /day	<40	<1.5
		lb/100in <sup>2</sup> /day	<2.5	<0.09
OTR (23°C & 0% RH)		cc/m <sup>2</sup> /day	<130	<1.5
		cc/100in <sup>2</sup> /day	<8.1	<0.09

\* As measured on Tobias Densitometer MD – Machine Direction | TD – Transverse Direction

Notes: 1) Metallized side is available wound inside/outside of the roll - customer to specify accordingly; 2) Metallization with Plasma Treatment for uniform and enhanced metal adhesion is available; 3) Above properties can be modified to suit customer's requirement; 4) Unless otherwise specified, the values given above are nominal.

## DISCLAIMER

The information given above is known to the best of our knowledge and experience. Some of the properties can be changed as a result of supplier's effort to improve upon the quality of production efficiency of the subject. The information is believed to be the true and accurate and is not intended to violate any statutory condition or right of third party. SRF makes no warranty, express or implied, as to the fitness of the product for any specific use or purpose. The above data is purely for the readers' consideration, investigation and verification and should be read in conjunction with the conditions for sale or contract.